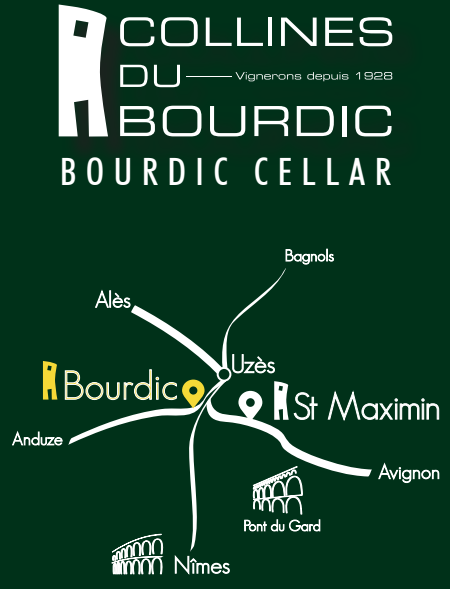


- 7 -- Then retrace your steps and head for the hill. Observe the polyculture, (vines cereals, legumes, truffles, olivettes,...) flourishing here without irrigation. Take a break and let yourself be seduced by our Mediterranean landscapes.
- 8 -- Arriving on the plateau, pass an old sheepfold and enjoy a 360 ° view over the eight main towns of the Collines du Bourdic: North and West to East, Garrigues- Sainte Eulalie, Aubussargues, Arpaillargues- Aureilhac, and Saint Maximin beyond Uzès. To the South, from East to West, Sanilhac-Sagriès, Blauzac and Sainte Anastasie and, the very close Gorges du Gardon « classified site ».
- 9 -- Continue on the path in the direction of the « Mazet des bombes », go around it and enjoy a plunging view over a pretty plot of vines in selection.
- 10 -- Join the path of the «Puget». To your right stands a large old mulberry tree, symbol of the Cévennes silkworm breeding activity (sericulture).
- 11 -- Cross the bridge, turn left just after, and follow the Bourdic river, to reach the village. Stop in the shade of tall trees and enjoy the cool and contemplate the fauna and flora of the banks.
- 12 -- Come back to the village through its typical narrow streets. Pass in front of the stone-built Protestant temple, erected in 1838. Follow the lane and fall back on your steps at the beginning of the path for the last two crossings of the Bourdic! In its setting, the village also reveals a 12th century Roman-Byzantine style Romanesque church.

- 1 -- Departure from the cellar (AV. of the schools) towards the village. Turn right (Ch. De St Chaptes) past the old railway linking Uzès to Nozières (27 km). Innovated in 1883 and dismantled in 1942, this railway infrastructure was one of the strategic assets for the establishment of the cellar in 1928.
- 2 -- Find the old railway station on your left and the cooperative cellar on your right. Cross the Bourdic river and with a bit of luck observe its fauna (fish, beavers, ducks, coypu...).
- 3 -- Turn left before the stadium and after crossing the Bourdic once again, you arrive at the town hall square. At the corner of the square, see the levels reached by the floods. At the end of the square is a drinking trough dating from 1841.
- 4 -- Take the first bridge on your right and admire the magnificent footbridge of the 17th century castle with its wrought iron railings. It leads to a large meadow, called « La Béguine », surrounded by an old circular and shady walkway, planted with Mediterranean and exotic species (Honey locust).
- 5 -- Continue your way by strolling in the heart of the vineyard and discover our great diversity of grape varieties. Cereal crops, asparagus and other cereals are also grown. (cultivated in France from the 15th century onwards).
- 6 -- Km 2,3 : Take the time to contemplate the landscape and the ancient rocky graves on a mound in the garrique (dated from the 7th century by Édouard Drouot and dug into the bedrock). These tombs were orientated from west to east «to express the expectation of the rising of the day of resurrection and judgement».

30190 BOURDIC - 8 km from Uzès dir. Anduze
Coord. GPS : N 43° 59' 11.845-E 4° 20' 05.213



Our wineries labelled Quality Tourism Occitanie
 Sud de France welcome you all year round

**GUIDED AND COMMENTED TOURS (FRENCH/ENGLISH)
 THURSDAYS IN JULY AND AUGUST**

Discovery path - Departure at 9.30am - Duration 1h30 - July/August - 5€/adult
 Cellar and winery visit - Departure at 3.30pm - Duration 1h00 - July/Mid-August - 5€/adult

RESERVATION RECOMMENDED ON OUR WEBSITE
WWW.COLLINES-DU-BOURDIC.COM

BOOKINGS FOR GROUPS
 04 66 81 81 65 or contact@bourdic.fr



Alcohol abuse is dangerous for your health – Drink responsibly – Do not throw on the public highway.

DISCOVERY TRAIL

**VINES | WINES
 & HERITAGE**

By the winegrowers of Collines du Bourdic



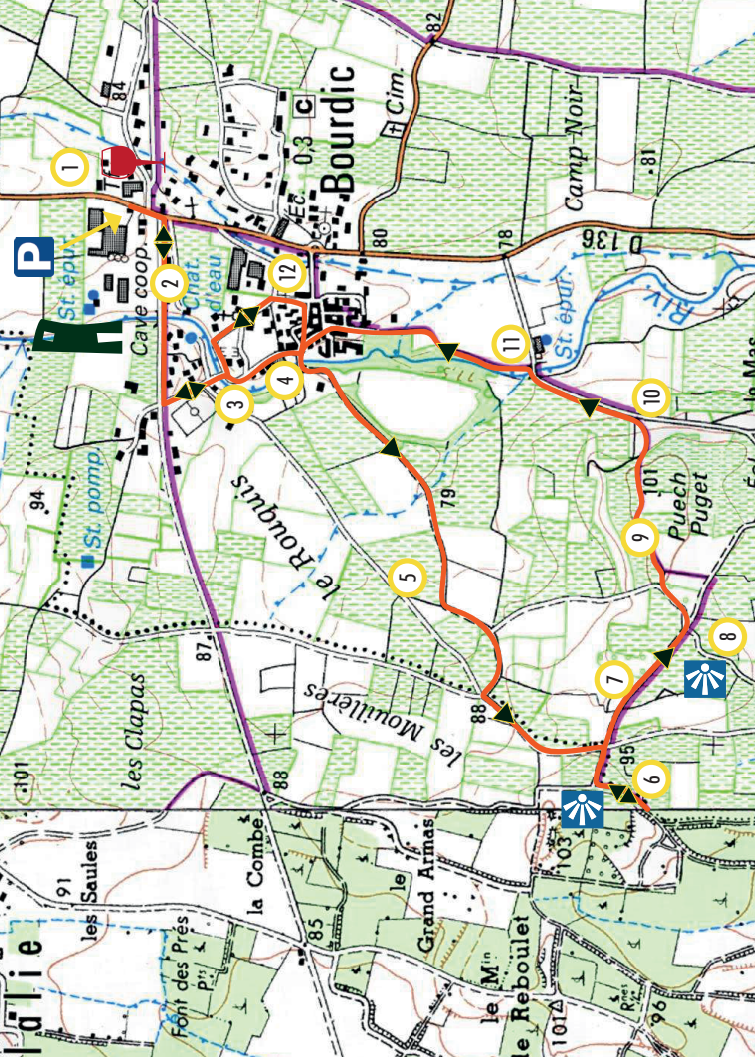
5.8 Km - 1h30 - Easy level

MARKED TRAIL WITH EXPLANATORY PANELS

- A self-guided walk open all year round
- A guided tour and visit of the winery in tourist season
- Wine tasting



FROM OUR « TERROIR » TO OUR STAINLESS STEEL CATHEDRAIS, TRAVEL BETWEEN TRADITION AND MODERNITY



PRACTICAL INFORMATION

- ◆ Check the weather
Météo France at 3250
- ◆ Avoid going out in
the hottest hours
of the day
- ◆ Bring water, wear
comfortable shoes
and sun protection



◆ Respect nature and the
environment



MAP KEY

- « Vines, Wines and Heritage » Discovery trail
- Wine-tasting cellar
- ① Points of interest
- P Parking
- View point

SIGNAGE



MARKERS

- Wine-tasting cellar
- Change of direction
- Wrong direction

THE VINEYARDS AND THE TERROIR

From Saint Chaptès, the westernmost territory, by the way of Uzès to the Pont du Gard, and skirting the Gorges du Gardon to the south, our vineyards cover 1800 hectares. Benefiting from an exceptional microclimate, our plains and hillsides bathed by the Mediterranean sun are close to the foothills of the Cévennes, which gives our wines their specificity: a beautiful freshness.

Our terroir is made up of clayey-limestone, stony, poor and filtering soils which ensure good water rationing for the vine stocks. The diversity of this terroir and the rigorous plot selection put in place by the winery enable us to produce wines of character and recognised quality that are regularly rewarded with the highest distinctions.

Our wines are labelled AOP Duché d'Uzès, IGP Gard, IGP Cévennes or IGP Pays d'Oc.



THE BOURDIC RIVER

A sub-tributary of the Rhône, the Bourdic has its source 12 km to the north of the village and flows 20 km through a dozen or so communes as far as the Gardon to the south.

In 1547, it gave its name to the village. A second category river, it is possible to fish for trout and pike. Despite being a relatively calm river, in 2002, it experienced its highest flood. By rising 1.5 m above the level of the bridge, it devastated part of the village.

THE ENVIRONMENT

« Over the last ten years or so, vine cultivation and protection have evolved thanks to reliable 5-day weather forecasts, disease modelling, and our cellar technicians in the field who observe, analyse and guide us towards undertaking work in the vineyard that is only necessary (sustainable and reasoned agriculture). In this way, we limit the use of treatment products. We have eliminated anti-botrytis treatment and insecticides and reduced herbicides by 75%. All the members of the cooperative are committed to sustainable agriculture, respectful of the environment, and among us, several are converting to organic farming. » The cooperative winegrowers

HERITAGE TO SEE

- The old railway station
- A 19th century well, fountain and drinking trough
- The 17th century castle and its stone and wrought iron bridge
- Ancient stone graves
- The 17th century dovecote
- The 12th century Romanesque church
- The Protestant temple built 1838

THE CELLAR

Our cellar, created in 1928, has never ceased to evolve, always with a dynamic of innovation. Fair and united, « One man, one voice », our cooperative allows us to put efforts and means together to vinify our grapes and make a living from our profession. Meticulous plot selection, rigorous specifications, harvesting at optimum ripeness and high-performance vinification tools enable our winery to magnify the work of its winegrowers.

Today we are 110 winegrowers attached to our territory, and we are committed to a responsible approach, particularly in terms of the environment.

We invite you to come to our two tasting cellars and discover our AOP Duché d'Uzès, IGP Gard, IGP Cévennes and IGP Pays d'Oc wines

We cultivate 25 grape varieties to offer you a varied and attractive range of wines. Varietal wines, blends, a range of organic wines, top-of-the-range vintages, sweet wines, sparkling wines... in white, rosé and red!



© Fanny Jorda-Iniguez